

# Redfields Scouting for Food Drive (430 houses total)



## Sunset Overlook Scouting for Food Drive (40 houses total)



### Flyer Placement:

1. Can't put in or on mailboxes
2. Best place is sticking out from under front doormat, make sure it won't blow away!

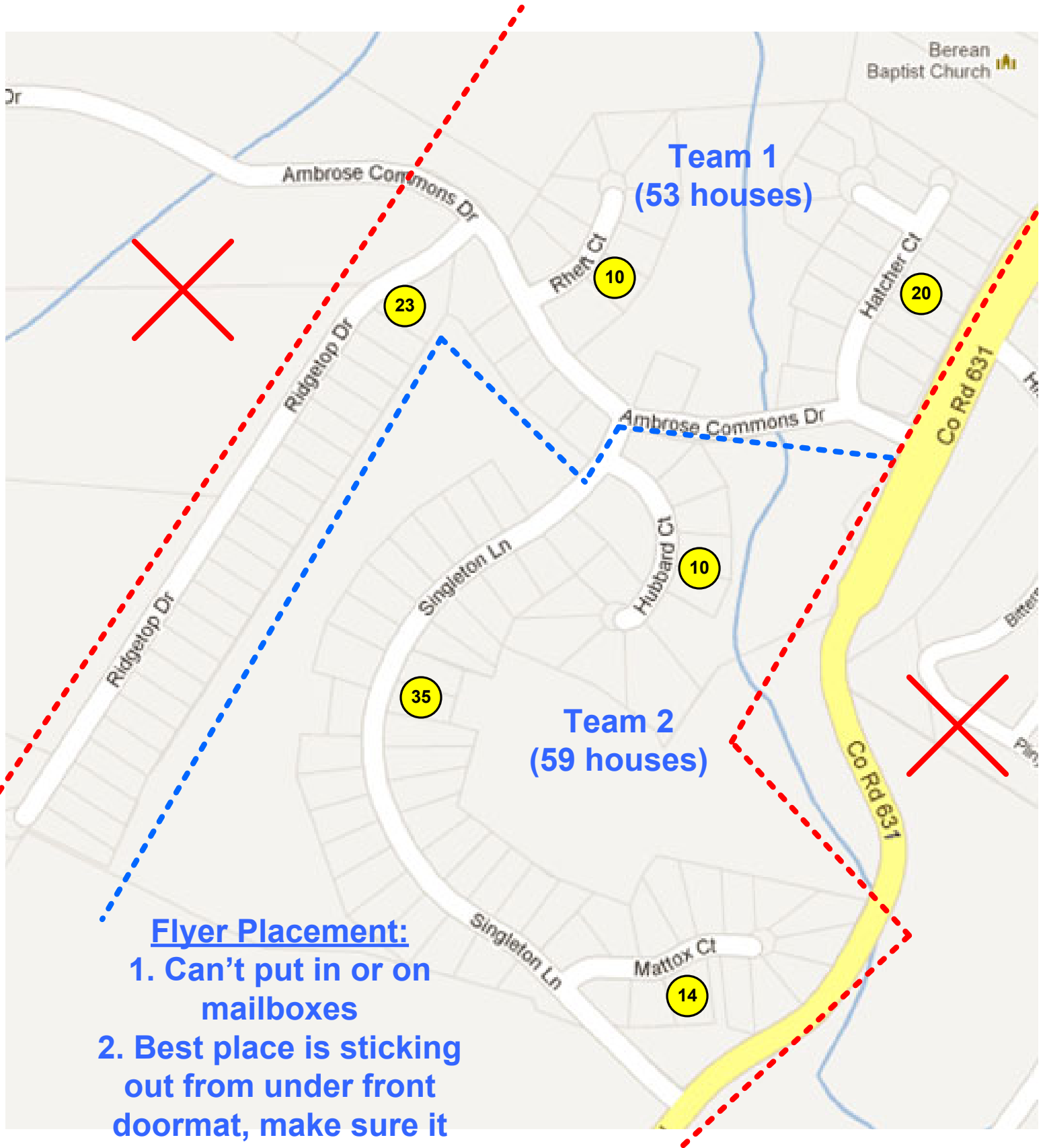
# Oak Hill Farm Scouting for Food Drive (75 houses total)



## Flyer Placement:

1. Can't put in or on mailboxes
2. Best place is sticking out from under front doormat, make sure it won't blow away!

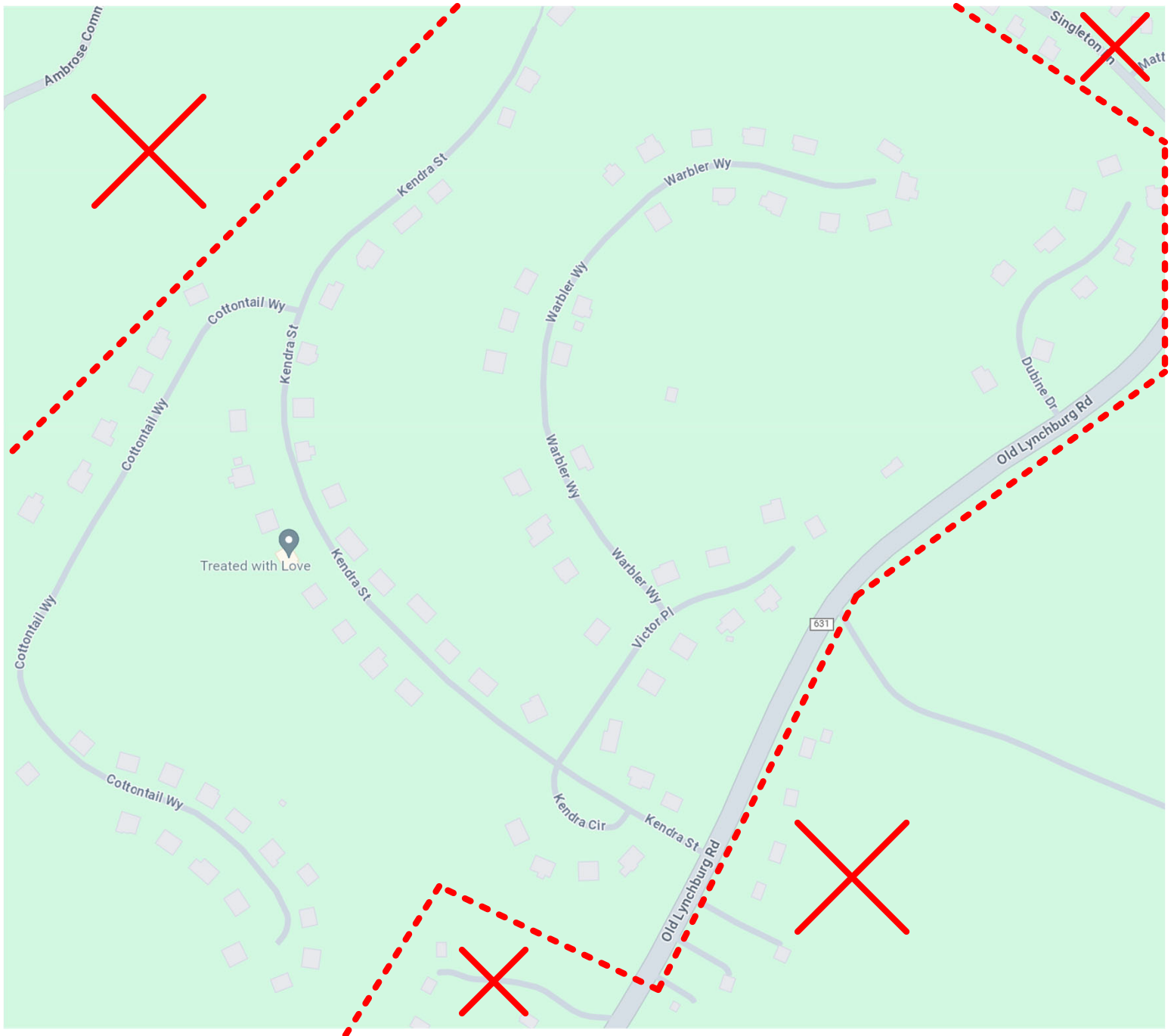
# Mosby Mountain Scouting for Food Drive (125 houses total)



## Flyer Placement:

1. Can't put in or on mailboxes
2. Best place is sticking out from under front doormat, make sure it won't blow away!

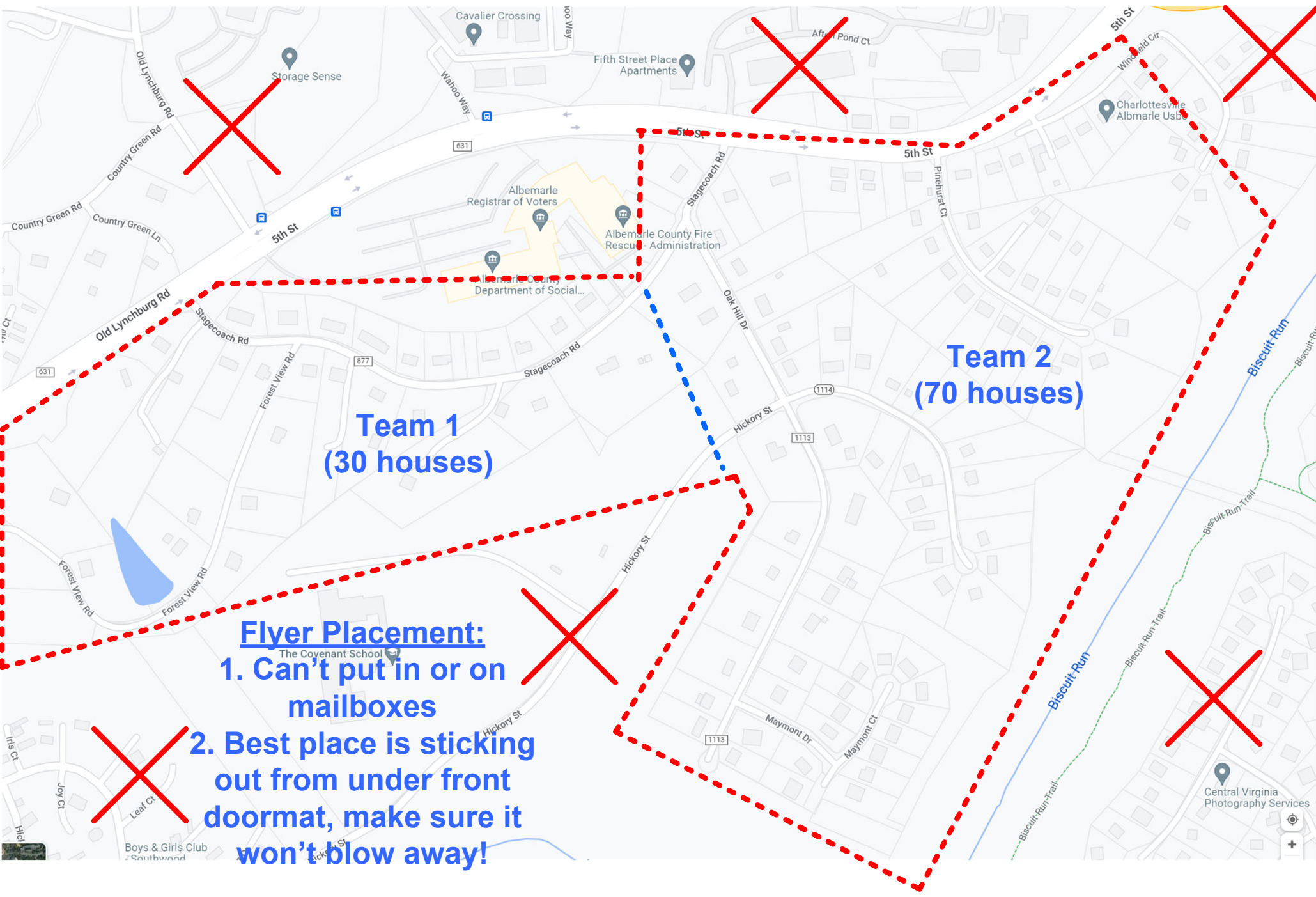
# Whittington Scouting for Food Drive (100 houses total)



## Flyer Placement:

1. Can't put in or on mailboxes
2. Best place is sticking out from under front doormat, make sure it won't blow away!

# Oak Hill (behind 5<sup>th</sup> St COB) Scouting for Food Drive (100 houses total)



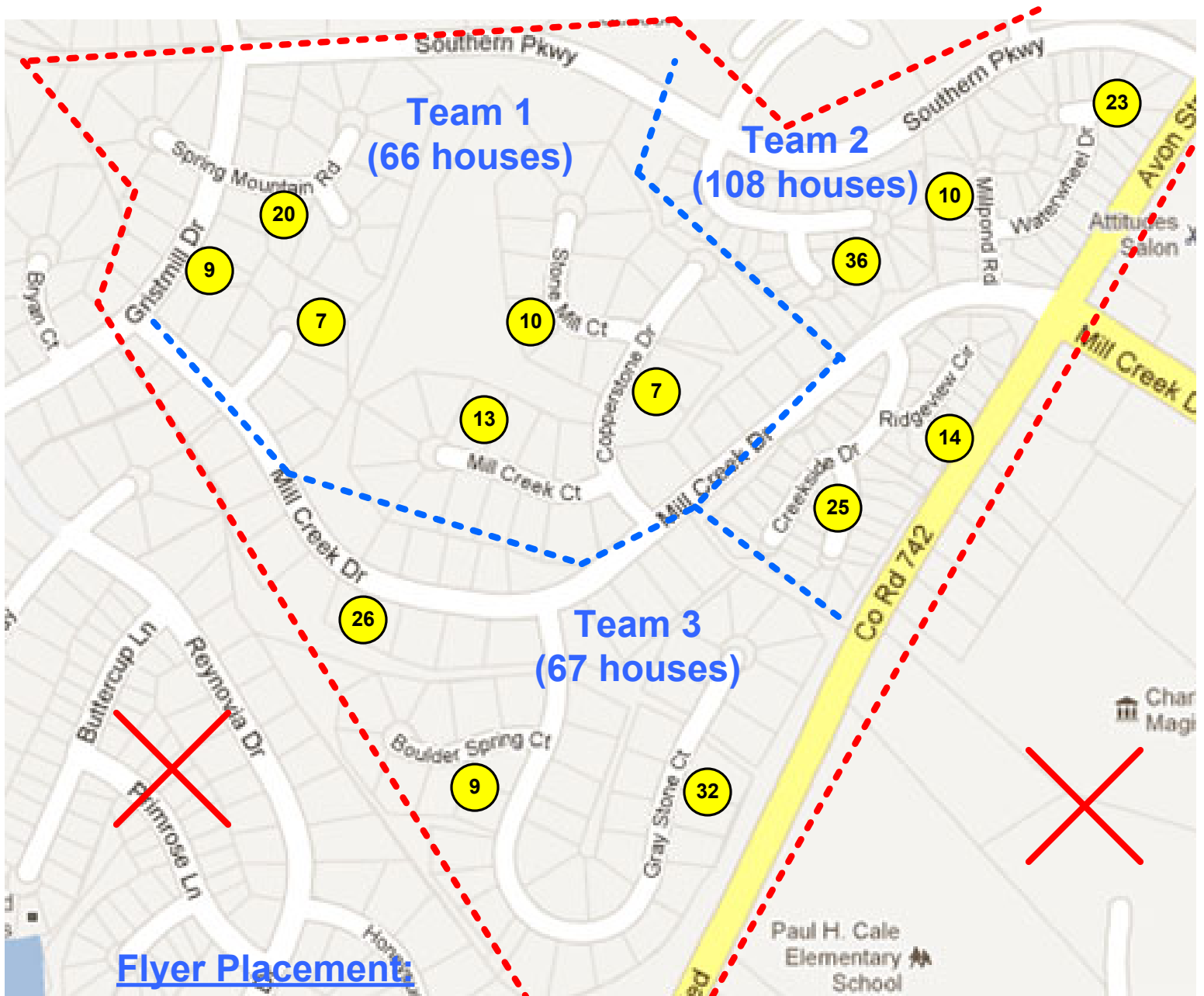
**Team 1  
(30 houses)**

**Team 2  
(70 houses)**

**Flyer Placement:**

- 1. Can't put in or on mailboxes**
- 2. Best place is sticking out from under front doormat, make sure it won't blow away!**

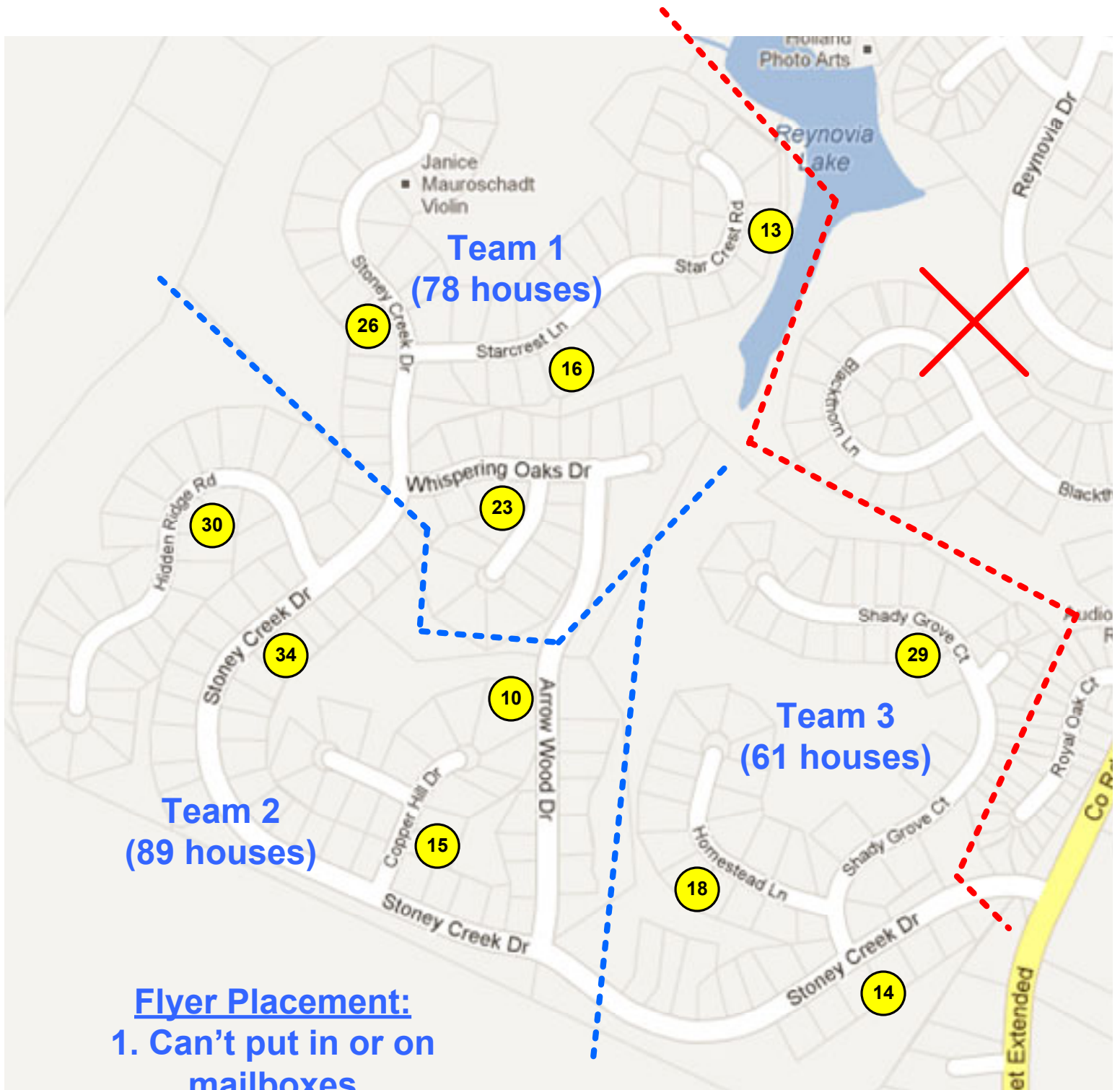
# Mill Creek Scouting for Food Drive (250 houses total)



## Flyer Placement:

1. Can't put in or on mailboxes
2. Best place is sticking out from under front doormat, make sure it won't blow away!

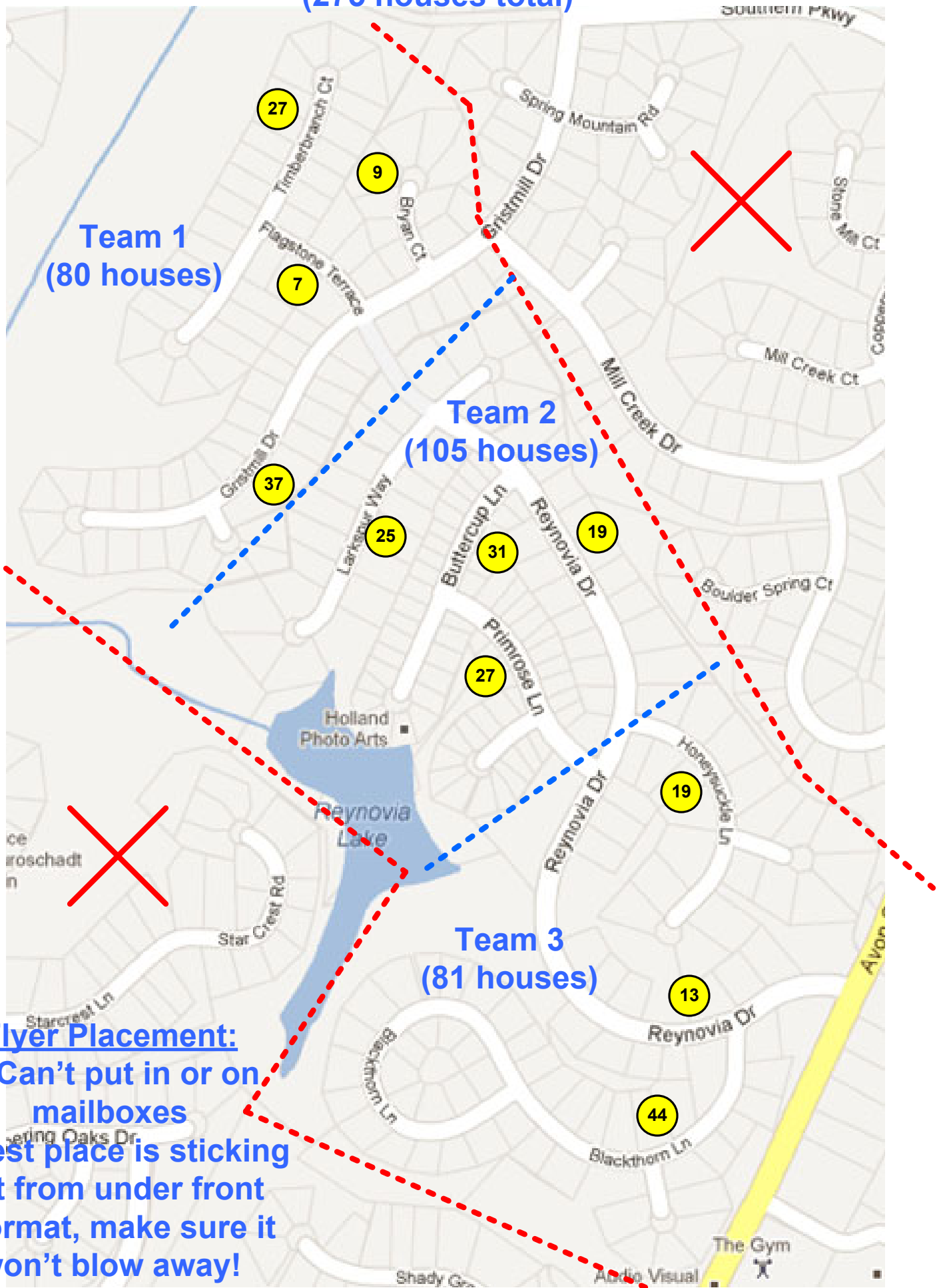
# Mill Creek South Scouting for Food Drive (230 houses total)



1. Can't put in or on mailboxes
2. Best place is sticking out from under front doormat, make sure it won't blow away!



# Lake Reynovia Scouting for Food Drive (275 houses total)



## Flyer Placement:

1. Can't put in or on mailboxes
2. Best place is sticking out from under front doormat, make sure it won't blow away!

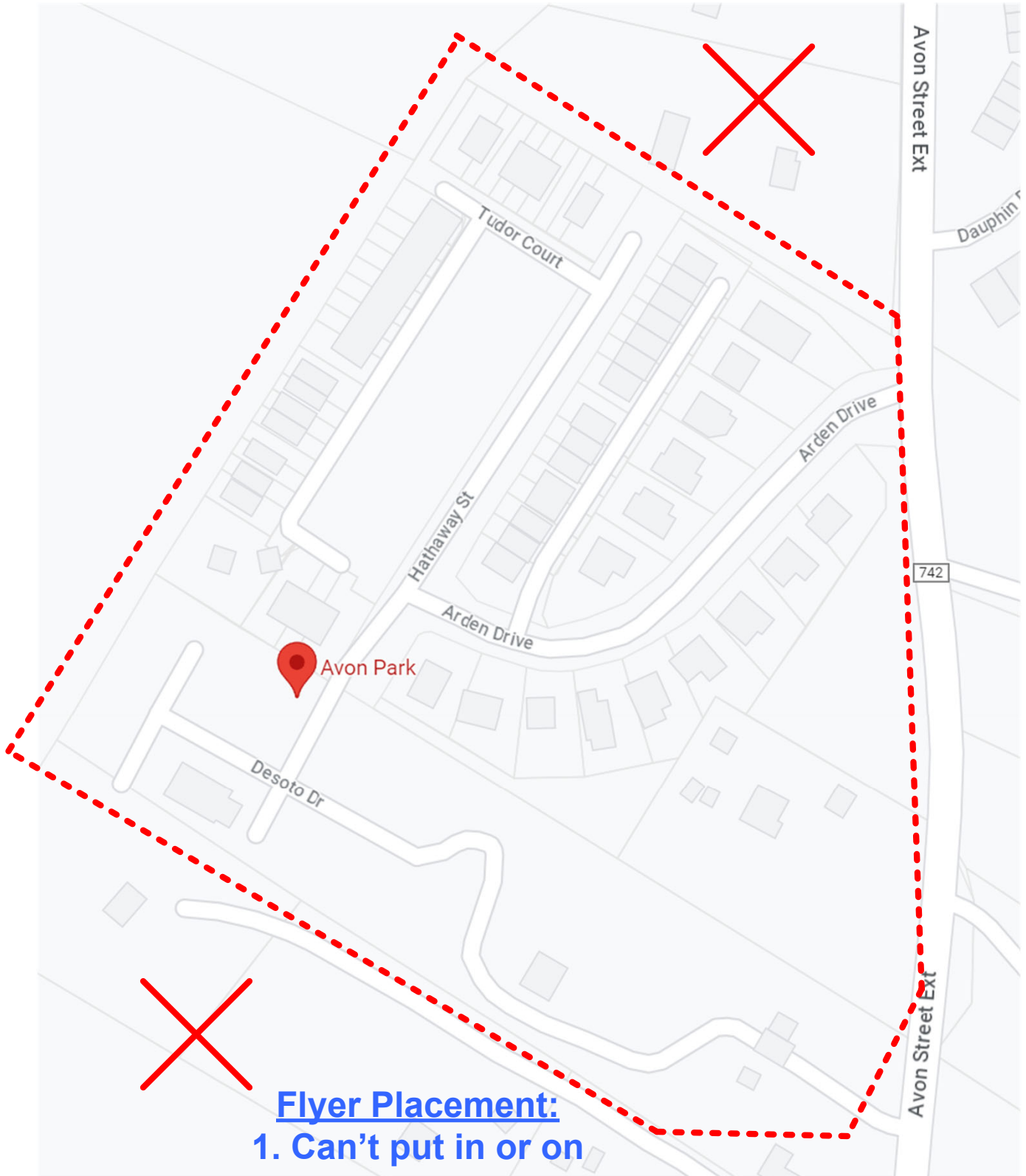
# Spring Hill Village Scouting for Food Drive (90 houses total)



## Flyer Placement:

1. Can't put in or on mailboxes
2. Best place is sticking out from under front doormat, make sure it won't blow away!

# Avon Park Scouting for Food Drive (60 houses total)



## Flyer Placement:

1. Can't put in or on mailboxes
2. Best place is sticking out from under front doormat, make sure it won't blow away!

# Avinity Scouting for Food Drive (200 houses total)



**Team 1  
(100 houses)**

**Team 2  
(100 houses)**

## Flyer Placement:

1. Can't put in or on mailboxes
2. Best place is sticking out from under front doormat, make sure it won't blow away!

# Foxcroft Scouting for Food Drive (150 houses total)

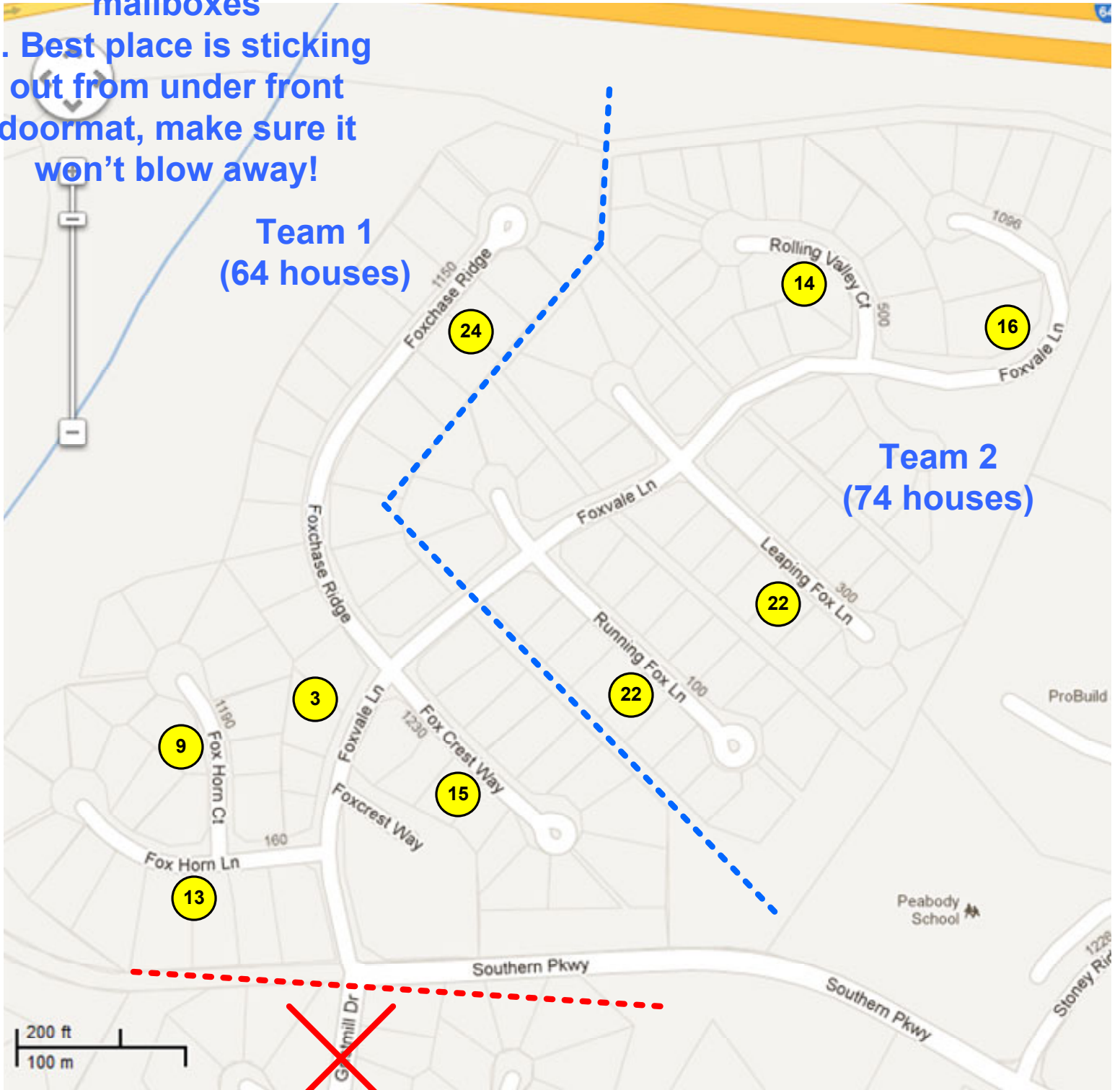
## Flyer Placement:

1. Can't put in or on mailboxes

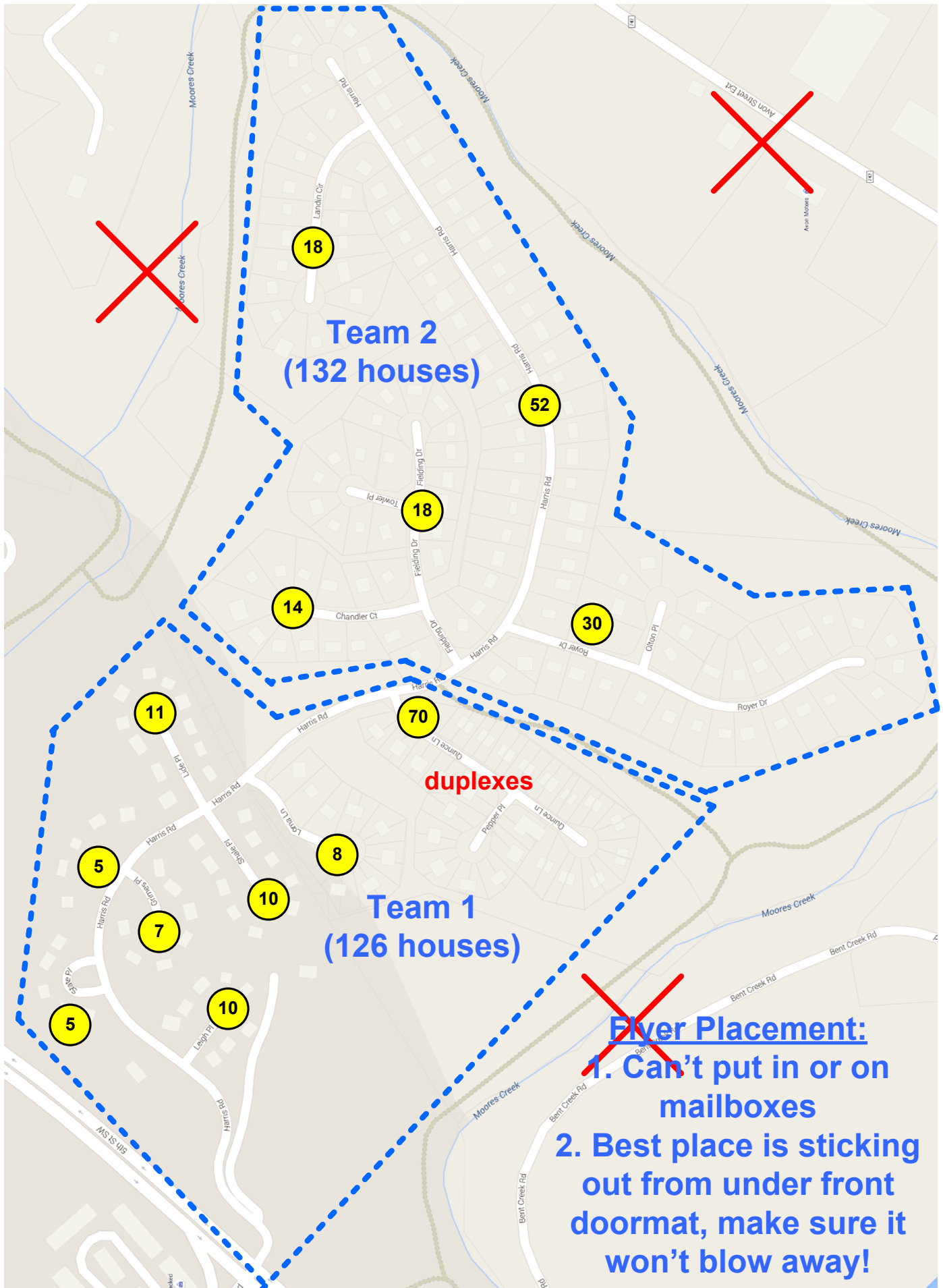
2. Best place is sticking out from under front doormat, make sure it won't blow away!

**Team 1  
(64 houses)**

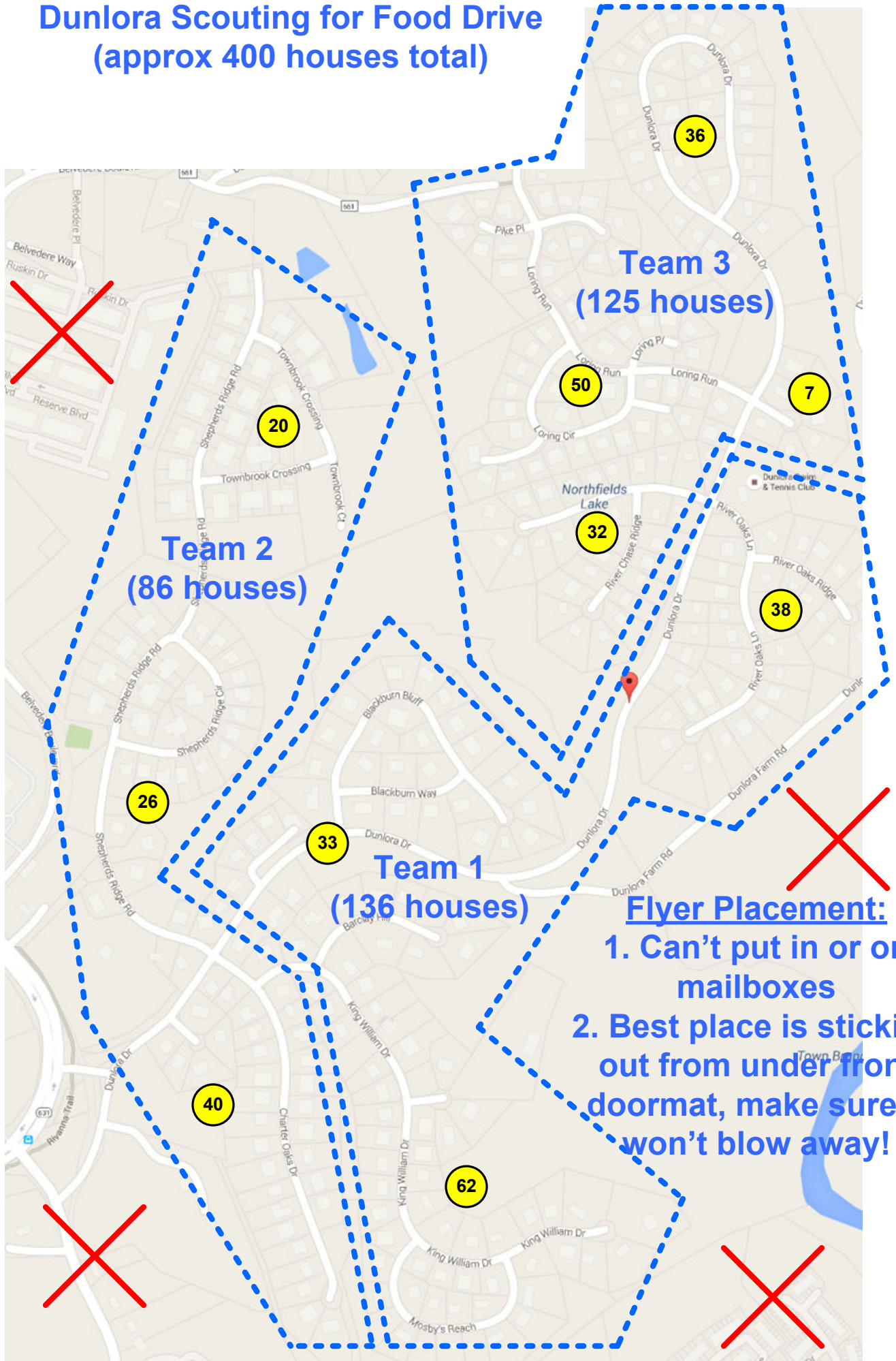
**Team 2  
(74 houses)**



# Willoughby Scouting for Food Drive (approx 240 houses total)



# Dunlora Scouting for Food Drive (approx 400 houses total)



# Fry's Spring / Johnson Village / Cherry Hill Scouting for Food Drive (approx 200 houses total)

