

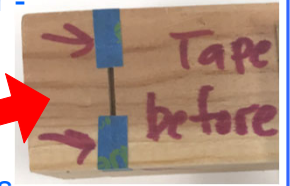


Attaching Wheels the Mr. Eric Way (final step after all painting is done)

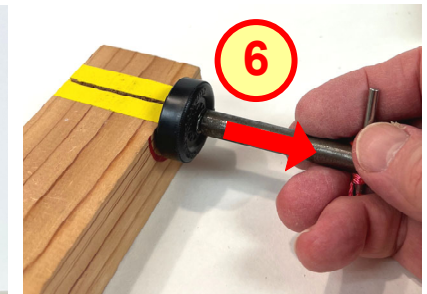
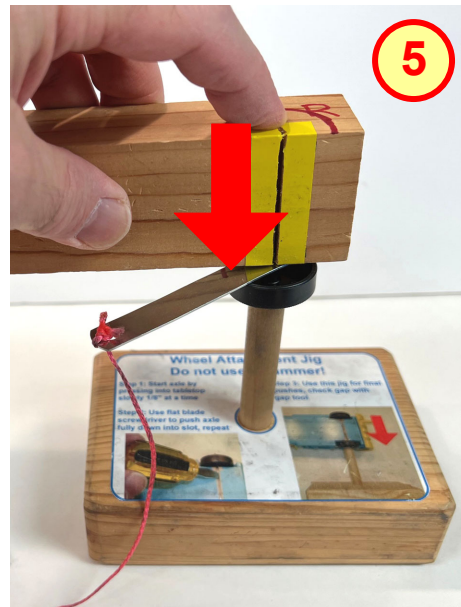
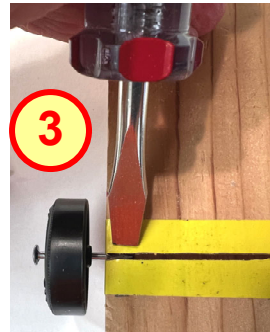
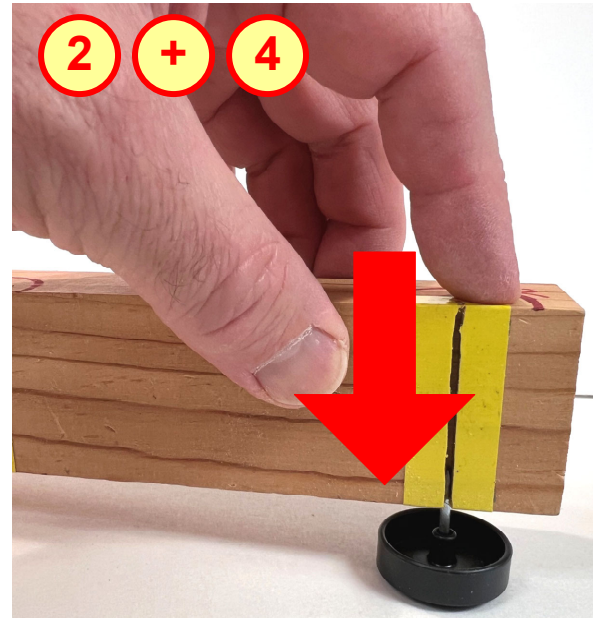


**NEVER EVER EVER EVER USE A
HAMMER FOR THIS !!!**

- Attaching wheels is one of the most stressful steps in completing your PWD car - if you break out an axle slot it can be very difficult to repair on race day
- An important step BEFORE this is to cover your axle slots with masking tape before spray painting – this keeps the paint from gunking up the slots !
- Use the right tools (mostly muscle), take your time, and follow these instructions



- 1 – Insert axle into wheel and lay on sturdy table, ouchy end pointing up
- 2 – Going very slowly, push the car onto the axle about 1/8" at a time, aiming to be as deep and straight in slot as possible **(see 3 wheel note below)**
- 3 – Check to make sure the axle is straight, push fully into slot using stubby screwdriver if needed
- 4 – Repeat steps 2 and 3 until the axle is almost fully inserted, keep checking as you go
- 5 – For the final push, insert the silver gap tool and use Mr. Eric's push jig to push the car body all the way onto the axle, then pull out the gap tool (it should be tight)
- 6 – if you need to pull out the axle to start over, use the axle puller tool! Pull straight and do NOT rock the axle back and forth
- Repeat for all four wheels
- Remember to apply black graphite to all wheels/axles right before the race!



Do not use white teflon lubricant on wheels/axles – your car will be slower than my grandmother !!

Use BLACK graphite with Molybdenum for super speed !!!

ONLY black graphite is allowed – no oils or other lubricants

- **3 wheel note:** If you want 3 wheels touching for speed, place a flat toothpick in either of the FRONT axle slots before inserting axle. This will make only this wheel touch the track and the other front wheel will be free spinning (physics concept is 3 wheels instead of 4 touching is less friction/drag)

