



# Mobilization Plan

Is your troop prepared if your community asks you to help during or after an emergency?

**In any disaster, your first responsibility is to your family and home.**



# Parts of an

# Emergency Mobilization Plan

- Communications
  - Before and during the service project
- Resources and assets
- Safety and security
- Responsibilities
  - What type of service will you provide?
    - SAR, debris removal, support to other responders?
- Support activities for your troop
  - Are you self sufficient? First aid? Food? Shelter?





# What type of service will you provide?



## Direct Contact

- Search and Rescue
  - Wilderness
  - Rubble
- Labor
  - Fill sandbags, build firebreak, etc.
  - Remove rubble, muck, fallen trees, etc.
  - Repair damaged roofs, walls, etc.

## Support to Others

- Crowd/traffic control
- Messenger service
- Collection, distribution, logistics
- Group feeding, shelter, sanitation
  - This could be for responders or for displaced persons



# Scouts Help Others

- Crowd and Traffic Control.
  - **Prepare for:** Caution tape, reflective vest, Flashlight
  - **Training needed:** crowd behavior and traffic safety
  - **Safety Precautions:** Supervision is necessary. Leave if situations become dangerous.
- Messenger Service and Communication
  - **Prepare for:** Map area and assign sections. Know your area. Ham Radio, Tactical Communications, Signaling.
  - **Training needed:** Bike Safety, brief messages. Radio/Phone Etiquette.
  - **Safety Precautions:** Bike Safety, Traffic Safety.
- Collection and Distribution Services
  - **Prepare for:** Maps, distribution and collection locations
  - **Training needed:** Food Collection (Scouting for Food)
  - **Safety Precautions:** Crowd control
- Group Feeding, Shelter and Sanitation
  - **Prepare for:** Cooking equipment, latrine equipment, tents.
  - **Training needed:** Cooking knowledge, know how to setup tents.
  - **Safety Precautions:** Hygiene and Sanitation, proper food handling.





# Typical Plan Contents

- 1-page executive summary
  - Purpose
  - Definitions
  - Summary of Concept of Operations
- Notification process
  - Community call to SM. SM writes the “script”
    - Script includes times, places, packing list, communication plan, logistics (travel, food, etc.)
  - Phone tree, tweet tree, web page, in-person, ....
- Appendices (lists, etc.)
  - Personal emergency pack
  - Personal gear pack (camping)
  - “Phone tree” plan
    - For communication to organize the service project
  - Troop gear emergency pack
  - Troop gear pack (camping)
  - Pre-planned communication strategy
    - For communication during the service project
  - “All Scouts Should Know”



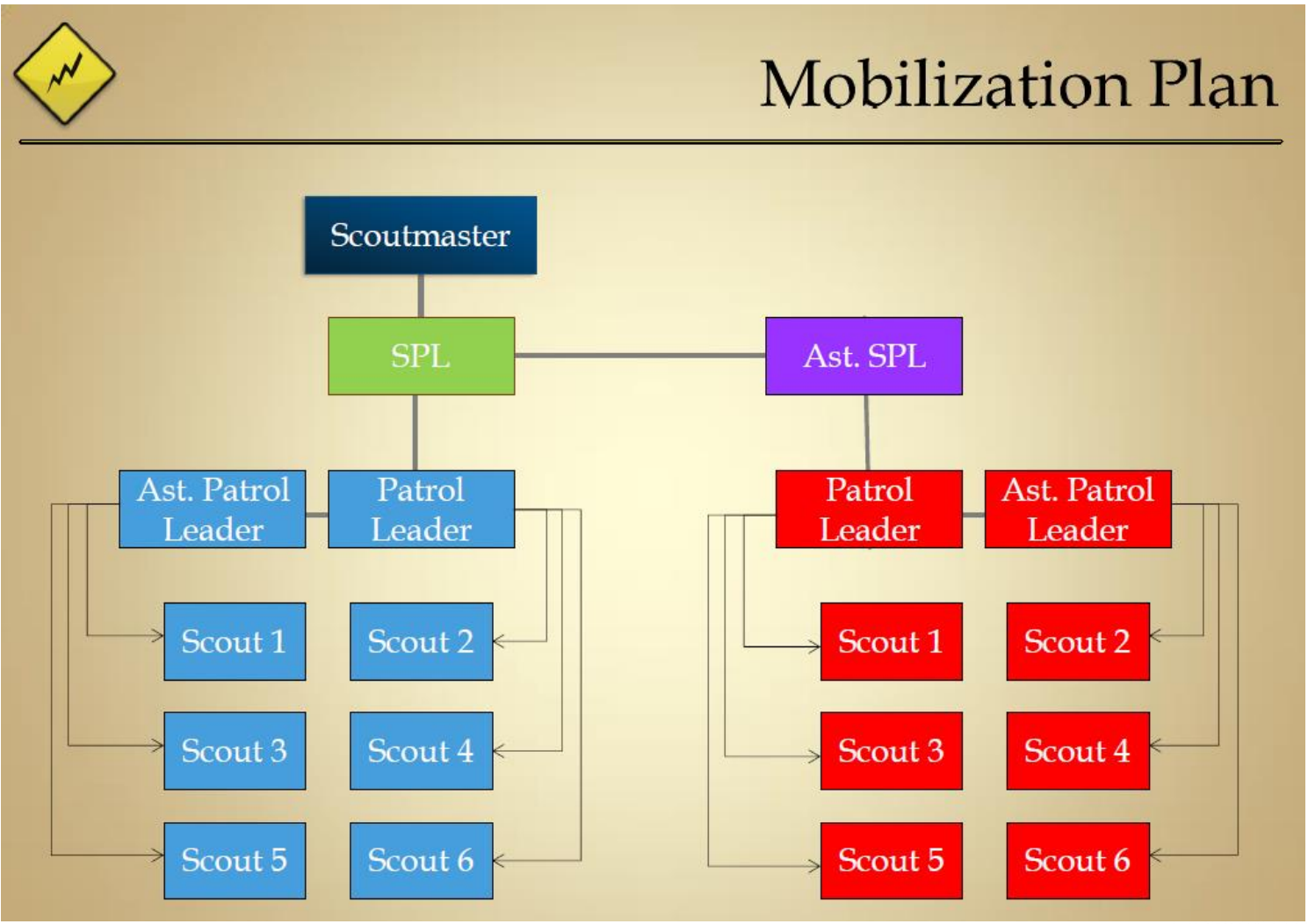


# All Scouts Should Know

1. Bring a complete Personal **Emergency Service Pack** and any **other items** that you are instructed to bring.
2. Wear a **Class A Uniform** to the emergency response mobilization location, unless told otherwise.
3. Be prepared to **stay for the entire length** of the Emergency Service Response, or until dismissed by the Scoutmaster or the SPL.
4. Arrive at the emergency response location and locate the SPL/ASPL to be assigned a task to complete. If they can't locate their SPL/ASPL, then they should find the Assistant Scoutmaster or Scoutmaster.
5. Direct all communications, questions, or requests for information from outsiders to the Scoutmaster at all times.
6. **Report all injuries** received at any time, no matter how minor, to the Scoutmaster.
7. If the response involves the assembly of **troop living quarters** (i.e. tents), a minimum of two Scouts will be assigned as security to guard the troop living quarters for the duration of the emergency response.



# “Phone Tree”





# Risk Note

Being prepare does not mean taking risk needlessly. In situations where a scout lacks necessary skill or knowledge because he has not had the training or experience or when equipment is unavailable or is inadequate, the scout has an obligation to advise their supervisor of the unsafe situation and propose alternative solutions.